



CABIN DESIGN

Modern and Cosy

Choose a gold finish for your cabin to make it a focal point in your home. This will help create a warm, inviting space that blends modern and natural elements seamlessly.



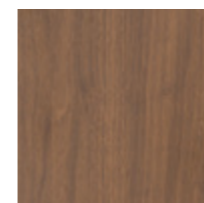
To complement a warm woodgrain, select a gold finish for the interior. Adding a little gold to your cabin shows a touch of elegance and class.

Select from a range of white stone flooring, from subtle to bold veining.

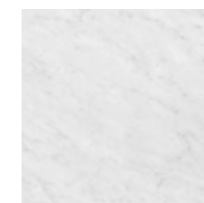
Adding a lighter colour to your cabin can help break up the darker walls.



Get the Look



Wall Panel
Florentine
Walnut



Flooring
Alexandra



Control Panel
RAL 1036



Mirror
Burnished



Urban Industrial

If you're wanting to add some industrial charm to your cabin, select this exposed concrete textured wall panel. Don't be afraid to incorporate other materials and textures, as we have a range of different wall panels and flooring to choose from.



A full-length mirror is a great use of space. It's not only functional but also makes the space feel bigger and less closed in.

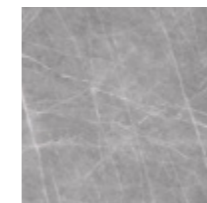
This beautiful grey stone is a nice statement piece that complements any cooler-toned, industrial-style cabin.



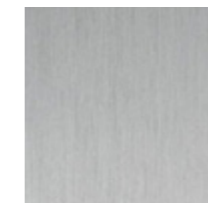
Get the Look



Wall Panel
Urban Style
(Fin. Climb)



Flooring
Zaha Stone
(Fin. Silk)



Control Panel
OXNA
Anodised



Mirror
Silver



Serene Space

It's all in the details - create a calming space and a sense of class with this green and bronze-style cabin. Having muted green as your main cabin colour can help bring a sense of peace and security into your home.



The natural mineral stone flooring complements the green and bronze, creating a welcoming and harmonious blend to your space.

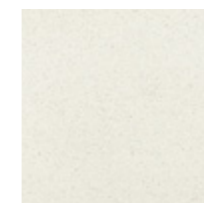
This muted shade of green is subtle and less of a statement colour if you're wanting to add some colour to your cabin instead of picking a wood wall panel or a bright colour.



Get the Look



Wall Panel
Agave



Flooring
Pure
Mineralstone II
Natural



Control Panel
RAL 9005



Mirror
Burnished



Minimalist Style

Create an open space with your cabin by choosing finishes that look clean and simple. The wall panel has a simple finish, and its shade of light grey brings a large amount of brightness to the space without looking too cold.



Sleek black trims add a touch of modern sophistication to the entire space.

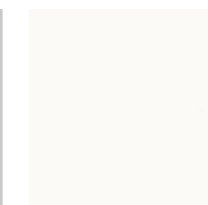
Light grey walls impart a sense of spaciousness and tranquility.



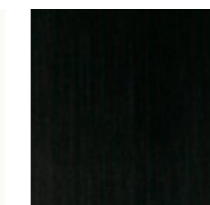
Get the Look



Wall Panel
Grigio Lastra



Flooring
Arctic White



Control Panel
RAL 9005



Mirror
Silver



Timeless Classic

This cabin is designed to be adaptable and suitable for all types of homes. The grey undertones in the wall panels and flooring work well with the silver trims to bring a sense of calmness to the space.



The elegant stone flooring features dark veining that not only enhances its beauty but also offers a cool, smooth tone that is timeless.

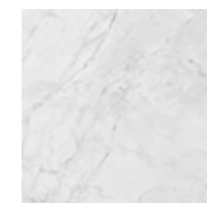
This woodgrain has a smoky appearance, which can add a warmer tone to the space.



Get the Look



Wall Panel
Aurora Norvegia



Flooring
Alexandra



Control Panel
OXNA
Anodised



Mirror
Silver



Make a Statement

Why not make your cabin look unique and memorable by selecting a bold colour. This low-sheen shade of dark red is a statement to your home and shows a sense of passion that brings an energetic vibe to your space.



This bold red colour makes your cabin feel warm and inviting.

Selecting a light ascent colour, like a white stone for the flooring, helps lighten up the space and balance the use of bold colour.

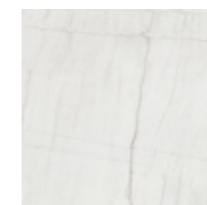
Silver trims with a shine adds a modern touch to the entire space.



Get the Look



Wall Panel
Kalamata Natural



Flooring
Mont Blanc



Control Panel
OXNA
Anodised



Mirror
Silver



Be Bold

For a sleek-looking cabin, why not explore the option of choosing an all-black cabin? This ultra-modern design is not only bold, but adds an element of simplicity and elegance, it's a statement piece that is both masculine and stylish.



The white stone finish flooring, with its grey veins, helps tie in with the darker color of the cabin, brightening the overall space and preventing it from feeling too dark.

Gloss finishes can sometimes appear outdated and are more prone to showing marks. Consider choosing a matte black finish for the control panels to give your space a stylish and sleek look.



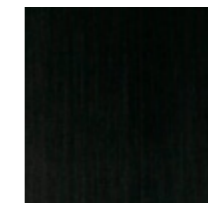
Get the Look



Wall Panel
Nero Ingo



Flooring
Estatuario



Control Panel
RAL 9005



Mirror
Silver



Chic Contemporary

This style of cabin shows a different level of sophistication and distinction. Its gorgeous grey tones and breathtaking downlight feature showcase a classic and elegant design for your home.



Choosing a black trim finish, seamlessly enhances the grey wood grain texture of the walls, creating a harmonious blend of contemporary flair and refined style that elevates the entire space.

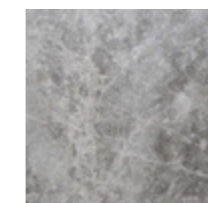
Select a flooring that is rich in texture. This darker flooring looks beautiful when paired with a black control panel with a subtle shine.



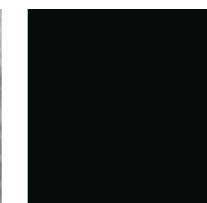
Get the Look



Wall Panel
Tornado
PureGrain



Flooring
Portsea Grey
Limestone



Control Panel
Venice Touch
Black



Mirror
Silver

MADE IN ITALY



Melbourne Showroom

456 Smith Street
Collingwood VIC 3066

Sydney Showroom

647 Botany Road
Rosebery NSW 2018

Queensland

PO Box 6347
Meridan Plains QLD 4551